

The University of Pennsylvania design studio, under contract to the University of Central Florida's Metropolitan Center for Regional Studies has prepared a scenario for urbanization in the State of Florida by the year 2060 that illustrates a future Florida that departs significantly from current trends.

A previous forecast, completed in 2006 by the University of Florida's GeoPlan Center, projected that a continuation of current development trends in Florida would result in conversion of over half of the state's remaining natural and agricultural lands to urban development by the year 2060. This 2060 Current Trend scenario has been called "Not a Pretty Picture" by 1000 Friends of Florida, the sponsor of that research.

In response to the Trend scenario, the Metropolitan Center commissioned the University of Pennsylvania to illustrate a "2060 Alternative Scenario". Under the direction of Jonathan Barnett, a renowned regional planner, a studio class of 16 students worked diligently through the Winter semester of 2007 to prepare an alternative. This Alternative Scenario assumes that the state's population will grow from today's 18 million people to 36 million people in 2060, the same number as forecast for the Current Trend. However, the Alternative Scenario envisions that this growth will be accommodated in different locations and with different patterns of development, conservation and transportation than forecast by the Current Trend.

The Metropolitan Center serves as a link between the UCF campus and the region and state. The Center works in partnership with other institutions and organizations committed to a shared future that advances smart growth policies, economic prosperity, social connectedness, natural resource protection and individual well being.

The Alternative Scenario incorporates seven key principles for an alternative future for Florida:

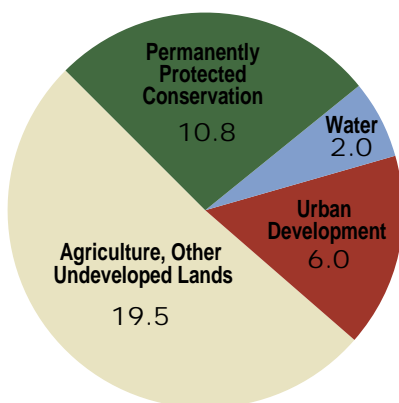
1. Protect Florida's Essential Land
2. Invest in Balanced Transportation
3. Plan for Climate Change
4. Don't Waste Land
5. Design With Nature
6. Encourage Compact Development
7. Rebuild to Create Great Places

In addition to these principles, the Alternative Scenario recognizes that to accommodate a total population of 36 million people, major efforts will be required to conserve water, reduce power use, secure alternative sources of power, and reduce fuel consumption.

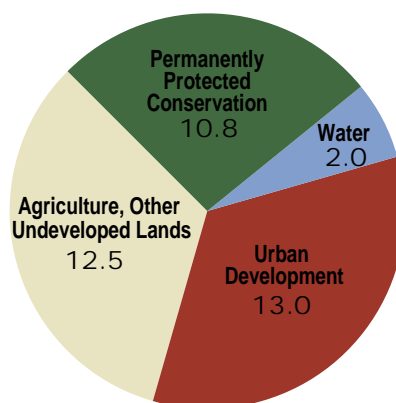
The Alternative Scenario represents a significant departure from most of the state's investment priorities and development practices that have created today's Florida. The full report illustrates how the seven principles can be implemented. Some of the key actions would include acquisition of conservation easements (and some fee simple purchases) for over eight million additional acres of agricultural and natural lands, construction of a statewide high speed rail system with connections to local rail transit systems in large cities, no new major highways, and increased densities for new development. Additionally, one major outcome of this alternate scenario is that the total costs would be less than the total cost of the Current Trend.

The UPenn Alternative Scenario suggests that by adopting and taking action on these principles, the people of Florida can welcome many new residents, including newborn babies and relatives who relocate from other states and countries while preserving our heritage and quality of life.

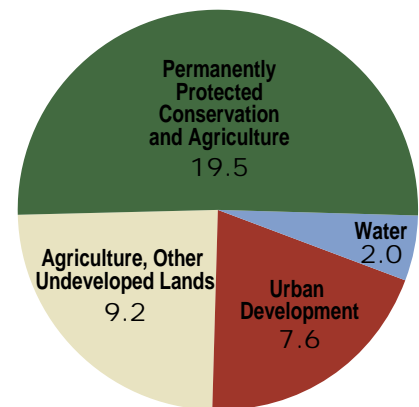
Statewide Total: 38.3 Million Acres



2005



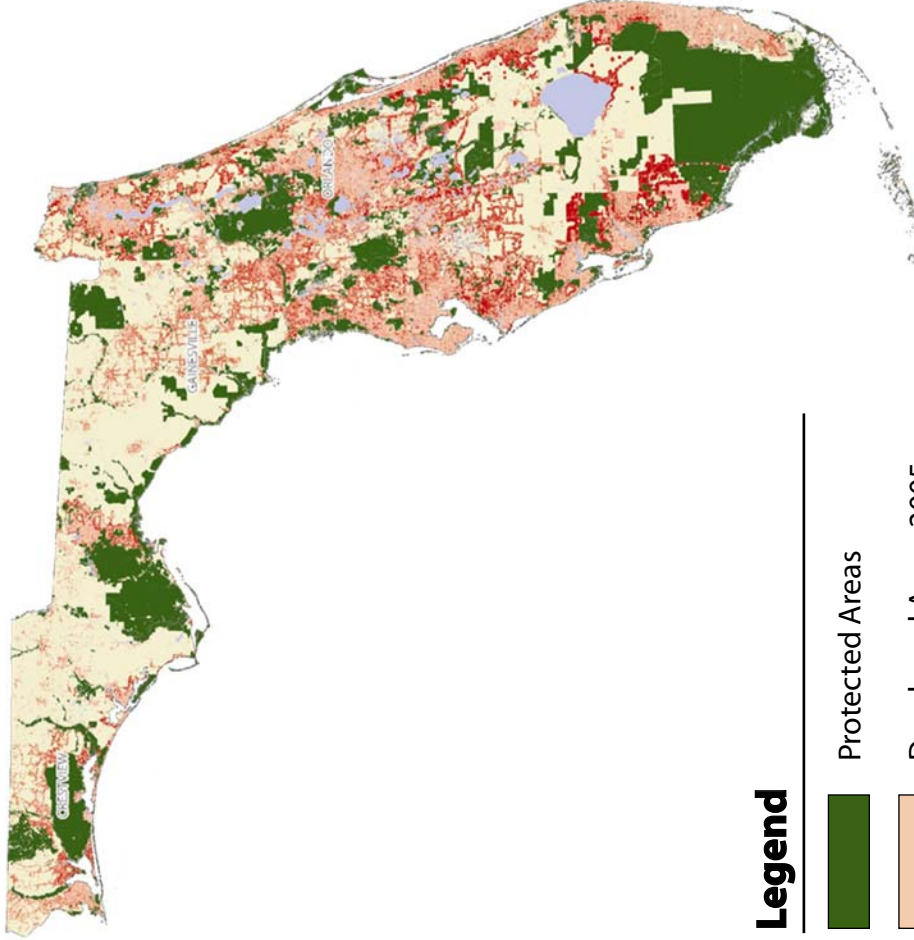
2060 Current Trend



2060 Alternative Scenario

FLORIDA 2060

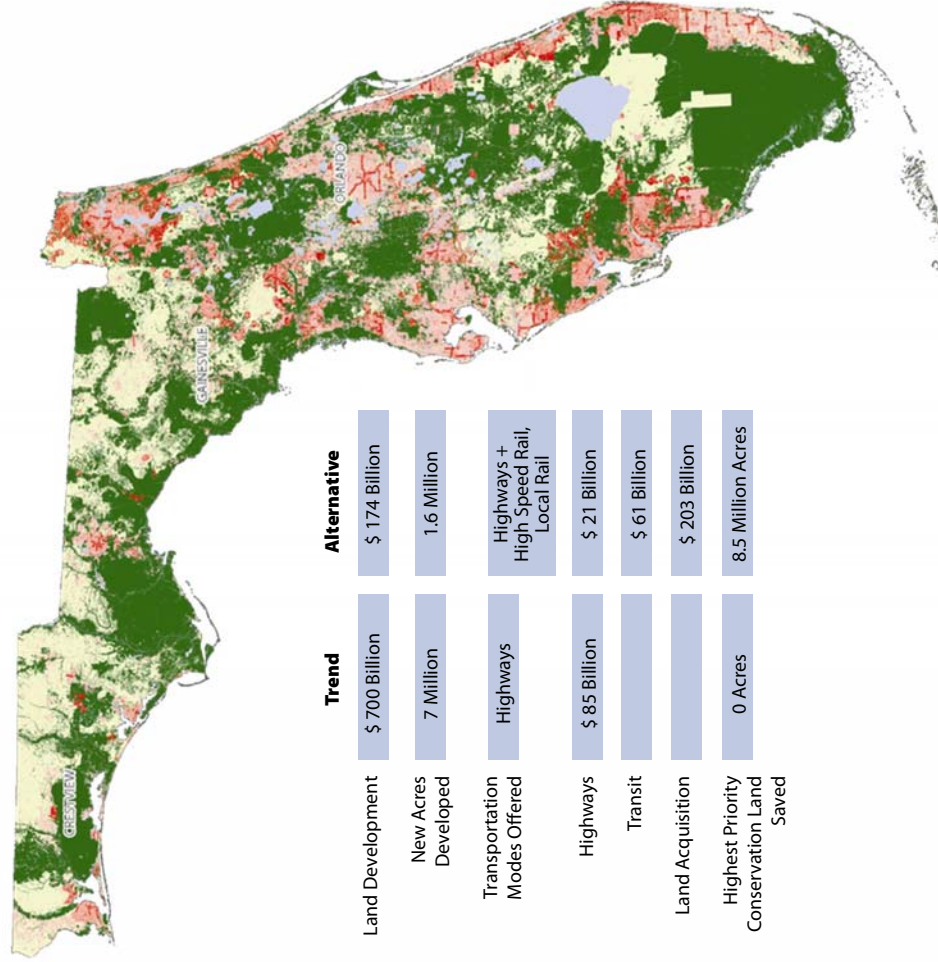
CURRENT TREND



Legend

- Protected Areas
- Developed Areas 2060
- Areas Developed by 2005
- Undeveloped Areas

ALTERNATIVE SCENARIO



	Trend	Alternative
Land Development	\$ 700 Billion	\$ 174 Billion
New Acres Developed	7 Million	1.6 Million
Transportation Modes Offered	Highways	Highways + High Speed Rail, Local Rail
Highways	\$ 85 Billion	\$ 21 Billion
Transit		\$ 61 Billion
Land Acquisition		\$ 203 Billion
Highest Priority Conservation Land Saved	0 Acres	8.5 Million Acres