

Table of Contents –State and Metro-Level Vehicle Miles Traveled Data

Methodology: The source for all of the data included in this analysis is from the Federal Highway Administration and the U.S. Census Bureau. These figures were calculated using 2005 and 1980 data for states and for 1992 and 2005 for metro areas. For information on VMT projections in the future, state by state, visit individual states' Department of Transportation websites, as these figures may be available there.

STATE DATA

1. Comprehensive VMT 1980 & 2005 Data
2. Annual VMT in 2005 Data
Annual VMT in 2005 Graph
3. Percent Change in Annual VMT Data (1980-2005)
Percentage Change in Annual VMT Graph (1980-2005)
4. Annual VMT Per Driver 2005 Data
Annual VMT Per Driver 2005 Graph
5. Percent Increase in Annual VMT per Driver (1980-2005)
Percent Increase Annual VMT per Driver Graph (1980-2005)
6. Percent Increase in State Population (1980-2005)
State Population Graph (1980-2005)

METRO DATA

7. Comprehensive VMT 1992 & 2005 Data
8. Total Annual VMT Data 2005
Total Annual VMT Graph
9. Change in Annual VMT Data (1992-2005)
Change in Annual VMT Graph (1992-2005)
10. Metro Change VMT Per Capita (1992-2005)
Metro Change VMT Per Capita Graph (1992-2005)
11. Daily VMT Per Capita Data (2005)

Table 1: Comparative Data by State on Population and Annual Vehicle-Miles Traveled from 1980 - 2005.

State	1980					2005					% Change between 1980 and 2005					
	Population	Total Number of Drivers	Percent of Pop. that Drives	Annual VMT (in Millions)	Annual VMT per Driver	Population	Total Number of Drivers	Percent of Pop. that Drives	Annual VMT (in Millions)	Annual VMT per Driver	Pop.	Total Number of Drivers	Percent of Pop. that Drives	Annual VMT	Annual VMT per Driver	
Alabama	AL	3,893,888	2,271,493	58.33	29,027	12,778.82	4,557,808	3,637,414	79.81	59,661	16,402.04	17.05	60.13	36.81	105.54	28.35
Alaska	AK	401,851	221,000	55.00	2,665	12,058.82	663,661	486,582	73.32	5,035	10,347.69	65.15	120.17	33.32	88.93	-14.19
Arizona	AZ	2,718,215	1,933,321	71.12	18,816	9,732.48	5,939,292	3,943,180	66.39	59,799	15,165.17	118.50	103.96	-6.65	217.81	55.82
Arkansas	AR	2,286,435	1,468,700	64.24	16,232	11,051.95	2,779,154	2,024,466	72.84	31,972	15,792.81	21.55	37.84	13.40	96.97	42.90
California	CA	23,667,902	15,668,731	66.20	155,890	9,949.11	36,132,147	22,895,965	63.37	329,267	14,381.01	52.66	46.13	-4.28	111.22	44.55
Colorado	CO	2,889,964	2,048,409	70.88	22,411	10,940.69	4,665,177	3,341,275	71.62	47,962	14,354.40	61.43	63.12	1.05	114.01	31.20
Connecticut	CT	3,107,576	2,174,482	69.97	19,409	8,925.80	3,510,297	2,740,270	78.06	31,675	11,559.08	12.96	26.02	11.56	63.20	29.50
Delaware	DE	594,338	417,462	70.24	4,232	10,137.45	843,524	610,406	72.36	9,508	15,576.52	41.93	46.22	3.02	124.67	53.65
Dist. of Columbia	DC	638,333	344,042	53.90	3,293	9,571.51	550,521	330,363	60.01	3,713	11,239.15	-13.76	-3.98	11.34	12.75	17.42
Florida	FL	9,746,324	7,267,962	74.57	79,002	10,869.90	17,789,864	13,373,700	75.18	201,531	15,069.20	82.53	84.01	0.81	155.10	38.63
Georgia	GA	5,463,105	3,423,669	62.67	43,188	12,614.54	9,072,576	5,939,513	65.47	113,509	19,110.83	66.07	73.48	4.46	162.83	51.50
Hawaii	HI	964,691	541,543	56.14	5,585	10,313.12	1,275,194	856,163	67.14	10,083	11,776.96	32.19	58.10	19.60	80.54	14.19
Idaho	ID	943,935	631,008	66.85	6,943	11,003.03	1,429,096	978,450	68.47	14,866	15,193.42	51.40	55.06	2.42	114.11	38.08
Illinois	IL	11,426,518	7,002,549	61.28	65,086	9,294.62	12,763,371	7,870,872	61.67	107,706	13,684.13	11.70	12.40	0.63	65.48	47.23
Indiana	IN	5,490,224	3,631,457	66.14	37,110	10,219.04	6,271,973	4,246,189	67.70	71,799	16,909.04	14.24	16.93	2.35	93.48	65.47
Iowa	IA	2,913,808	2,106,608	72.30	18,971	9,005.47	2,966,334	2,033,417	68.55	31,060	15,274.78	1.80	-3.47	-5.18	63.72	69.62
Kansas	KS	2,363,679	1,675,438	70.88	17,290	10,319.69	2,744,687	1,974,238	71.93	29,621	15,003.76	16.12	17.83	1.48	71.32	45.39
Kentucky	KY	3,660,777	2,055,297	56.14	25,233	12,277.06	4,173,405	2,860,729	68.55	47,466	16,592.27	14.00	39.19	22.09	88.11	35.15
Louisiana	LA	4,205,900	2,259,417	53.72	24,417	10,806.77	4,523,628	3,083,516	68.16	44,979	14,586.92	7.55	36.47	26.89	84.21	34.98
Maine	ME	1,124,660	729,893	64.90	7,455	10,213.83	1,321,505	1,003,972	75.97	14,925	14,865.95	17.50	37.55	17.06	100.20	45.55
Maryland	MD	4,216,975	2,721,609	64.54	28,585	10,502.98	5,600,388	3,709,594	66.24	56,319	15,181.98	32.81	36.30	2.63	97.02	44.55
Massachusetts	MA	5,737,037	3,640,202	63.45	35,390	9,721.99	6,398,743	4,612,829	72.09	55,458	12,022.56	11.53	26.72	13.61	56.71	23.66
Michigan	MI	9,262,078	6,400,000	69.10	62,059	9,696.72	10,120,860	7,105,272	70.20	104,052	14,644.34	9.27	11.02	1.60	67.67	51.02
Minnesota	MN	4,075,970	2,335,935	57.31	28,515	12,207.10	5,132,799	3,083,757	60.08	56,904	18,452.82	25.93	32.01	4.83	99.56	51.16
Mississippi	MS	2,520,638	1,587,011	62.96	16,514	10,405.72	2,921,088	1,965,464	67.29	42,186	21,463.63	15.89	23.85	6.87	155.46	106.27
Missouri	MO	4,916,686	3,244,744	65.99	34,061	10,497.28	5,800,310	4,135,394	71.30	68,754	16,625.74	17.97	27.45	8.03	101.86	58.38
Montana	MT	786,690	598,982	76.14	6,623	11,057.09	935,670	715,512	76.47	11,126	15,549.70	18.94	19.45	0.43	67.99	40.63
Nebraska	NE	1,569,825	1,093,255	69.64	11,255	10,294.94	1,758,787	1,320,617	75.09	19,291	14,607.57	12.04	20.80	7.82	71.40	41.89
Nevada	NV	800,493	625,673	78.16	6,107	9,760.69	2,414,807	1,596,353	66.11	20,776	13,014.67	201.66	155.14	-15.42	240.20	33.34
New Hampshire	NH	920,610	652,411	70.87	6,427	9,851.15	1,309,940	998,214	76.20	13,429	13,453.03	42.29	53.00	7.53	108.95	36.56
New Jersey	NJ	7,364,823	4,927,909	66.91	50,264	10,199.86	8,717,925	5,870,720	67.34	73,819	12,574.10	18.37	19.13	0.64	46.86	23.28
New Mexico	NM	1,302,894	854,562	65.59	11,308	13,232.51	1,928,384	1,304,721	67.66	23,966	18,368.68	48.01	52.68	3.15	111.94	38.81
New York	NY	17,558,072	9,240,059	52.63	77,622	8,400.60	19,254,630	11,071,911	57.50	137,521	12,420.71	9.66	19.83	9.27	77.17	47.86
North Carolina	NC	5,881,766	3,777,067	64.22	41,346	10,946.59	8,683,242	6,227,817	71.72	101,268	16,260.59	47.63	64.89	11.69	144.93	48.54
North Dakota	ND	652,717	418,758	64.16	5,284	12,618.27	636,677	466,701	73.30	7,570	16,220.24	-2.46	11.45	14.26	43.26	28.55
Ohio	OH	10,797,630	7,031,428	65.12	72,000	10,239.74	11,464,042	7,707,842	67.23	110,491	14,334.88	6.17	9.62	3.25	53.46	39.99
Oklahoma	OK	3,025,290	1,965,149	64.96	27,410	13,948.05	3,547,884	2,234,114	62.97	47,019	21,045.93	17.27	13.69	-3.06	71.54	50.89
Oregon	OR	2,633,105	1,990,689	75.60	19,088	9,588.64	3,641,056	2,692,948	73.96	35,282	13,101.63	38.28	35.28	-2.17	84.84	36.64
Pennsylvania	PA	11,863,895	7,056,168	59.48	71,542	10,138.93	12,429,616	8,460,530	68.07	108,042	12,770.12	4.77	19.90	14.45	51.02	25.95
Rhode Island	RI	947,154	586,637	61.94	5,424	9,245.92	1,076,189	746,465	69.36	8,300	11,119.07	13.62	27.24	11.99	53.02	20.26
South Carolina	SC	3,121,820	1,952,830	62.55	22,719	11,633.89	4,255,083	2,987,593	70.21	49,434	16,546.43	36.30	52.99	12.24	117.59	42.23
South Dakota	SD	690,768	480,778	69.60	6,195	12,885.36	775,933	566,255	72.98	8,397	14,829.01	12.33	17.78	4.85	35.54	15.08
Tennessee	TN	4,591,120	2,809,655	61.20	33,505	11,924.95	5,962,959	4,351,868	72.98	70,814	16,272.09	29.88	54.89	19.26	111.35	36.45
Texas	TX	14,229,191	9,287,826	65.27	110,381	11,884.48	22,859,968	14,659,390	64.13	235,170	16,042.28	60.66	57.83	-1.76	113.05	34.99
Utah	UT	1,461,037	844,717	57.82	10,845	12,838.62	2,469,585	1,599,514	64.77	25,158	15,728.53	69.03	89.36	12.02	131.98	22.51
Vermont	VT	511,456	343,900	67.24	3,700	10,758.94	623,050	563,162	90.39	7,713	13,695.88	21.82	43.76	34.43	108.46	27.30
Virginia	VA	5,346,818	3,460,686	64.72	38,532	11,134.21	7,567,465	5,178,156	68.43	80,337	15,514.60	41.53	69.63	5.72	108.49	39.34
Washington	WA	4,132,156	2,662,658	64.44	28,922	10,862.08	6,287,759	4,681,927	74.46	55,476	11,848.97	52.17	75.84	15.56	91.81	9.09
West Virginia	WV	1,949,644	1,506,401	77.27	10,746	7,133.56	1,816,856	1,327,569	73.07	20,523	15,459.08	-6.81	-11.87	-5.43	90.98	116.71
Wisconsin	WI	4,705,767	2,982,366	63.38	31,233	10,472.56	5,536,201	3,993,348	72.13	60,017	15,029.24	17.65	33.90	13.81	92.16	43.51
Wyoming	WY	469,557	346,250	73.74	5,008	14,463.54	509,294	382,735	75.15	9,058	23,666.51	8.46	10.54	1.91	80.87	63.63
Total		226,545,805	145,298,796		1,520,865	550,631	296,410,404	200,548,972		2,989,807	770,750					

Sources: Federal Highway Administration, <http://www.fhwa.dot.gov/>, August 7, 2007

US Census Bureau, August 7, 2007, <http://www.census.gov>

Table 2: State Comparison of Amount Vehicle-Miles Traveled in 2005

State	Rank	2005	
		Annual VMT (in Millions)	
California	CA	1	329,267
Texas	TX	2	235,170
Florida	FL	3	201,531
New York	NY	4	137,521
Georgia	GA	5	113,509
Ohio	OH	6	110,491
Pennsylvania	PA	7	108,042
Illinois	IL	8	107,706
Michigan	MI	9	104,052
North Carolina	NC	10	101,268
Virginia	VA	11	80,337
New Jersey	NJ	12	73,819
Indiana	IN	13	71,799
Tennessee	TN	14	70,814
Missouri	MO	15	68,754
Wisconsin	WI	16	60,017
Arizona	AZ	17	59,799
Alabama	AL	18	59,661
Minnesota	MN	19	56,904
Maryland	MD	20	56,319
Washington	WA	21	55,476
Massachusetts	MA	22	55,458
South Carolina	SC	23	49,434
Colorado	CO	24	47,962
Kentucky	KY	25	47,466
Oklahoma	OK	26	47,019
Louisiana	LA	27	44,979
Mississippi	MS	28	42,186
Oregon	OR	29	35,282
Arkansas	AR	30	31,972
Connecticut	CT	31	31,675
Iowa	IA	32	31,060
Kansas	KS	33	29,621
Utah	UT	34	25,158
New Mexico	NM	35	23,966
Nevada	NV	36	20,776
West Virginia	WV	37	20,523
Nebraska	NE	38	19,291
Maine	ME	39	14,925
Idaho	ID	40	14,866
New Hampshire	NH	41	13,429
Montana	MT	42	11,126
Hawaii	HI	43	10,083
Delaware	DE	44	9,508
Wyoming	WY	45	9,058
South Dakota	SD	46	8,397
Rhode Island	RI	47	8,300
Vermont	VT	48	7,713
North Dakota	ND	49	7,570
Alaska	AK	50	5,035
Dist. of Columbia	DC	51	3,713
Total			2,989,807

Sources: Federal Highway Administration, <http://www.fhwa.dot.gov/>, August
 US Census Bureau, August 7, 2007, <http://www.census.gov>

Annual Vehicle Miles Traveled in Each State in 2005

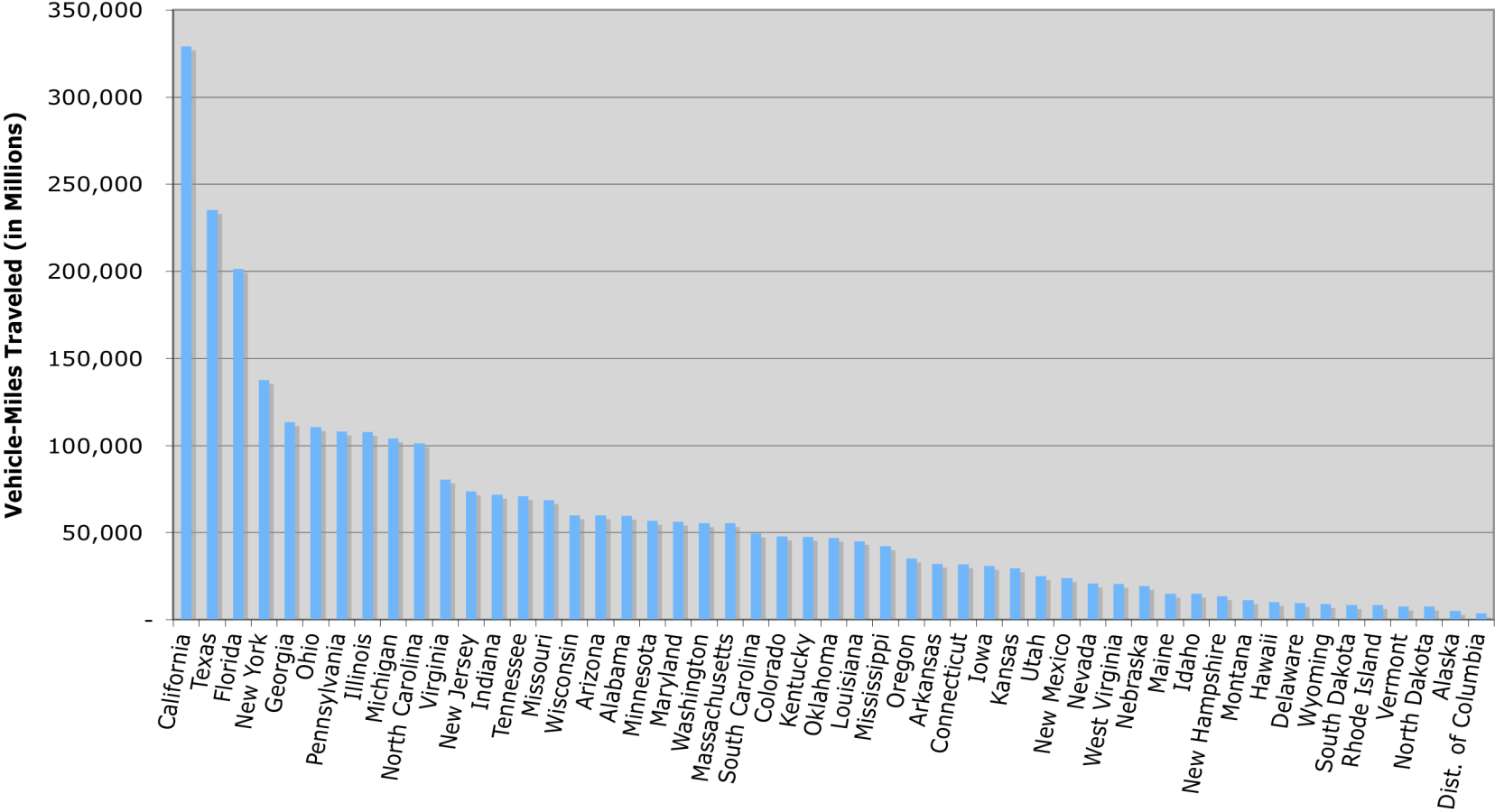


Table 3: State Comparison in Percent Change in Annual Vehicle-Miles Traveled from 1980 - 2005

State	Rank	1980		2005		% Change
		Annual VMT (in Millions)	Annual VMT (in Millions)	Annual VMT (in Millions)	Annual VMT (in Millions)	
Nevada	NV	1	6,107	20,776	240.20	
Arizona	AZ	2	18,816	59,799	217.81	
Georgia	GA	3	43,188	113,509	162.83	
Mississippi	MS	4	16,514	42,186	155.46	
Florida	FL	5	79,002	201,531	155.10	
North Carolina	NC	6	41,346	101,268	144.93	
Utah	UT	7	10,845	25,158	131.98	
Delaware	DE	8	4,232	9,508	124.67	
South Carolina	SC	9	22,719	49,434	117.59	
Idaho	ID	10	6,943	14,866	114.11	
Colorado	CO	11	22,411	47,962	114.01	
Texas	TX	12	110,381	235,170	113.05	
New Mexico	NM	13	11,308	23,966	111.94	
Tennessee	TN	14	33,505	70,814	111.35	
California	CA	15	155,890	329,267	111.22	
New Hampshire	NH	16	6,427	13,429	108.95	
Virginia	VA	17	38,532	80,337	108.49	
Vermont	VT	18	3,700	7,713	108.46	
Alabama	AL	19	29,027	59,661	105.54	
Missouri	MO	20	34,061	68,754	101.86	
Maine	ME	21	7,455	14,925	100.20	
Minnesota	MN	22	28,515	56,904	99.56	
Maryland	MD	23	28,585	56,319	97.02	
Arkansas	AR	24	16,232	31,972	96.97	
Indiana	IN	25	37,110	71,799	93.48	
Wisconsin	WI	26	31,233	60,017	92.16	
Washington	WA	27	28,922	55,476	91.81	
West Virginia	WV	28	10,746	20,523	90.98	
Alaska	AK	29	2,665	5,035	88.93	
Kentucky	KY	30	25,233	47,466	88.11	
Oregon	OR	31	19,088	35,282	84.84	
Louisiana	LA	32	24,417	44,979	84.21	
Wyoming	WY	33	5,008	9,058	80.87	
Hawaii	HI	34	5,585	10,083	80.54	
New York	NY	35	77,622	137,521	77.17	
Oklahoma	OK	36	27,410	47,019	71.54	
Nebraska	NE	37	11,255	19,291	71.40	
Kansas	KS	38	17,290	29,621	71.32	
Montana	MT	39	6,623	11,126	67.99	
Michigan	MI	40	62,059	104,052	67.67	
Illinois	IL	41	65,086	107,706	65.48	
Iowa	IA	42	18,971	31,060	63.72	
Connecticut	CT	43	19,409	31,675	63.20	
Massachusetts	MA	44	35,390	55,458	56.71	
Ohio	OH	45	72,000	110,491	53.46	
Rhode Island	RI	46	5,424	8,300	53.02	
Pennsylvania	PA	47	71,542	108,042	51.02	
New Jersey	NJ	48	50,264	73,819	46.86	
North Dakota	ND	49	5,284	7,570	43.26	
South Dakota	SD	50	6,195	8,397	35.54	
Dist. of Columbia	DC	51	3,293	3,713	12.75	
Total			1,520,865	2,989,807		

Sources: Federal Highway Administration, <http://www.fhwa.dot.gov/>, August 7, 2007
 US Census Bureau, August 7, 2007, <http://www.census.gov>

Percent Increase in State Annual VMTs, 1980-2005

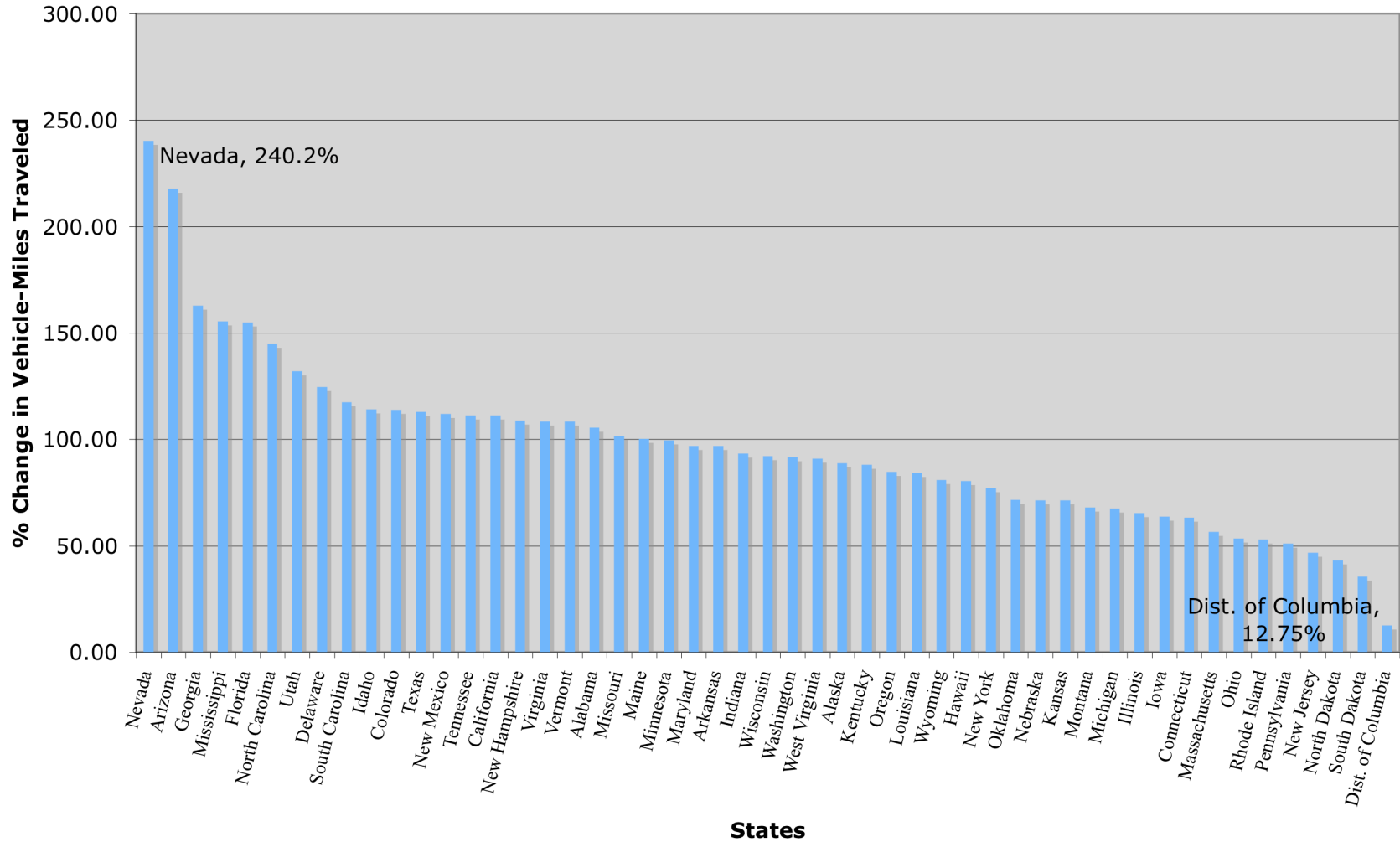


Table 4: State Comparison of Annual Vehicle-Miles Traveled in 2005

State	State	Rank	2005				
			Population	Total Number of Drivers	Percent of Pop. that Drives	Annual VMT (in Millions)	Annual VMT per Driver
Wyoming	WY	1	509,294	382,735	75.15	9,058	23,666.51
Mississippi	MS	2	2,921,088	1,965,464	67.29	42,186	21,463.63
Oklahoma	OK	3	3,547,884	2,234,114	62.97	47,019	21,045.93
Georgia	GA	4	9,072,576	5,939,513	65.47	113,509	19,110.83
Minnesota	MN	5	5,132,799	3,083,757	60.08	56,904	18,452.82
New Mexico	NM	6	1,928,384	1,304,721	67.66	23,966	18,368.68
Indiana	IN	7	6,271,973	4,246,189	67.70	71,799	16,909.04
Missouri	MO	8	5,800,310	4,135,394	71.30	68,754	16,625.74
Kentucky	KY	9	4,173,405	2,860,729	68.55	47,466	16,592.27
South Carolina	SC	10	4,255,083	2,987,593	70.21	49,434	16,546.43
Alabama	AL	11	4,557,808	3,637,414	79.81	59,661	16,402.04
Tennessee	TN	12	5,962,959	4,351,868	72.98	70,814	16,272.09
North Carolina	NC	13	8,683,242	6,227,817	71.72	101,268	16,260.59
North Dakota	ND	14	636,677	466,701	73.30	7,570	16,220.24
Texas	TX	15	22,859,968	14,659,390	64.13	235,170	16,042.28
Arkansas	AK	16	2,779,154	2,024,466	72.84	31,972	15,792.81
Utah	UT	17	2,469,585	1,599,514	64.77	25,158	15,728.53
Delaware	DE	18	843,524	610,406	72.36	9,508	15,576.52
Montana	MT	19	935,670	715,512	76.47	11,126	15,549.70
Virginia	VA	20	7,567,465	5,178,156	68.43	80,337	15,514.60
West Virginia	WV	21	1,816,856	1,327,569	73.07	20,523	15,459.08
Iowa	IA	22	2,966,334	2,033,417	68.55	31,060	15,274.78
Idaho	ID	23	1,429,096	978,450	68.47	14,866	15,193.42
Maryland	MD	24	5,600,388	3,709,594	66.24	56,319	15,181.98
Arizona	AZ	25	5,939,292	3,943,180	66.39	59,799	15,165.17
Florida	FL	26	17,789,864	13,373,700	75.18	201,531	15,069.20
Wisconsin	WI	27	5,536,201	3,993,348	72.13	60,017	15,029.24
Kansas	KS	28	2,744,687	1,974,238	71.93	29,621	15,003.76
Maine	ME	29	1,321,505	1,003,972	75.97	14,925	14,865.95
South Dakota	SD	30	775,933	566,255	72.98	8,397	14,829.01
Michigan	MI	31	10,120,860	7,105,272	70.20	104,052	14,644.34
Nebraska	NE	32	1,758,787	1,320,617	75.09	19,291	14,607.57
Louisiana	LA	33	4,523,628	3,083,516	68.16	44,979	14,586.92
California	CA	34	36,132,147	22,895,965	63.37	329,267	14,381.01
Colorado	CO	35	4,665,177	3,341,275	71.62	47,962	14,354.40
Ohio	H	36	11,464,042	7,707,842	67.23	110,491	14,334.88
Vermont	VT	37	623,050	563,162	90.39	7,713	13,695.88
Illinois	IL	38	12,763,371	7,870,872	61.67	107,706	13,684.13
New Hampshire	NH	39	1,309,940	998,214	76.20	13,429	13,453.03
Oregon	OR	40	3,641,056	2,692,948	73.96	35,282	13,101.63
Nevada	NV	41	2,414,807	1,596,353	66.11	20,776	13,014.67
Pennsylvania	PA	42	12,429,616	8,460,530	68.07	108,042	12,770.12
New Jersey	NJ	43	8,717,925	5,870,720	67.34	73,819	12,574.10
New York	NY	44	19,254,630	11,071,911	57.50	137,521	12,420.71
Massachusetts	MA	45	6,398,743	4,612,829	72.09	55,458	12,022.56
Washington	WA	46	6,287,759	4,681,927	74.46	55,476	11,848.97
Hawaii	HI	47	1,275,194	856,163	67.14	10,083	11,776.96
Connecticut	CT	48	3,510,297	2,740,270	78.06	31,675	11,559.08
Dist. of Columbia	DC	49	550,521	330,363	60.01	3,713	11,239.15
Rhode Island	RI	50	1,076,189	746,465	69.36	8,300	11,119.07
Alaska	AL	51	663,661	486,582	73.32	5,035	10,347.69
Total			296,410,404	200,548,972		2,989,807	770,749.73

Sources: Federal Highway Administration, <http://www.fhwa.dot.gov/>, August 7, 2007
 US Census Bureau, August 7, 2007, <http://www.census.gov>

Annual VMT Per Driver in 2005 by State, Highlighting Lowest and Highest

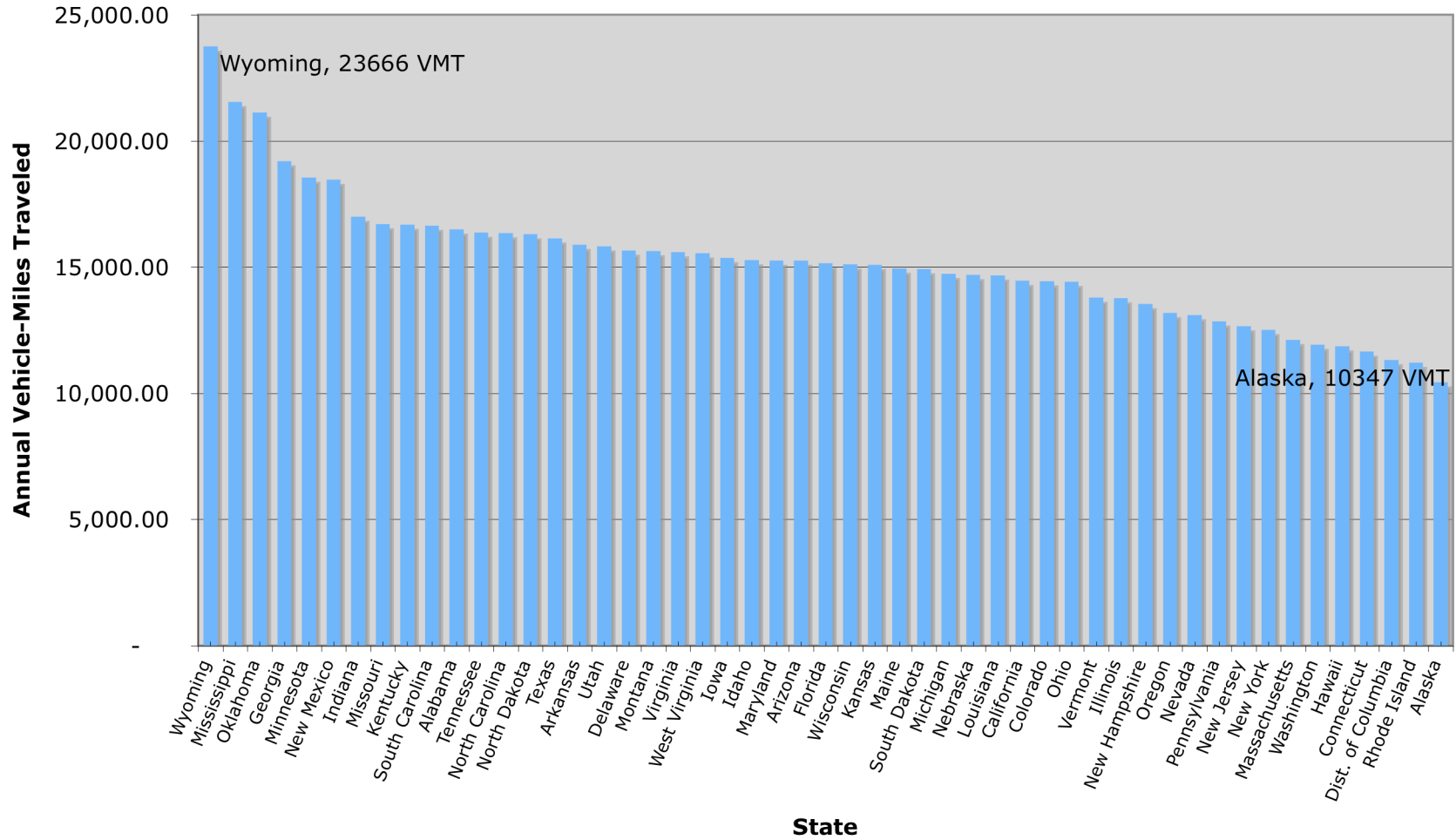


Table 5: Drivers, Annual Vehicle-Miles Traveled, and Percentage Change from 1980 - 2005

State	State	Rank	1980			2005			% Change		
			Total Number of Drivers	Annual VMT (in Millions)	Annual VMT per Driver	Total Number of Drivers	Annual VMT (in Millions)	Annual VMT per Driver	Total Number of Drivers	Annual VMT	Annual VMT per Driver
West Virginia	WV	51	1,506,401	10,746	7,133.56	1,327,569	20,523	15,459.08	-11.87	90.98	116.71
Mississippi	MS	50	1,587,011	16,514	10,405.72	1,965,464	42,186	21,463.63	23.85	155.46	106.27
Iowa	IA	49	2,106,608	18,971	9,005.47	2,033,417	31,060	15,274.78	-3.47	63.72	69.62
Indiana	IN	48	3,631,457	37,110	10,219.04	4,246,189	71,799	16,909.04	16.93	93.48	65.47
Wyoming	WY	47	346,250	5,008	14,463.54	382,735	9,058	23,666.51	10.54	80.87	63.63
Missouri	MO	46	3,244,744	34,061	10,497.28	4,135,394	68,754	16,625.74	27.45	101.86	58.38
Arizona	AZ	45	1,933,321	18,816	9,732.48	3,943,180	59,799	15,165.17	103.96	217.81	55.82
Delaware	DE	44	417,462	4,232	10,137.45	610,406	9,508	15,576.52	46.22	124.67	53.65
Georgia	GA	43	3,423,669	43,188	12,614.54	5,939,513	113,509	19,110.83	73.48	162.83	51.50
Minnesota	MN	42	2,335,935	28,515	12,207.10	3,083,757	56,904	18,452.82	32.01	99.56	51.16
Michigan	MI	41	6,400,000	62,059	9,696.72	7,105,272	104,052	14,644.34	11.02	67.67	51.02
Oklahoma	OK	40	1,965,149	27,410	13,948.05	2,234,114	47,019	21,045.93	13.69	71.54	50.89
North Carolina	NC	39	3,777,067	41,346	10,946.59	6,227,817	101,268	16,260.59	64.89	144.93	48.54
New York	NY	38	9,240,059	77,622	8,400.60	11,071,911	137,521	12,420.71	19.83	77.17	47.86
Illinois	IL	37	7,002,549	65,086	9,294.62	7,870,872	107,706	13,684.13	12.40	65.48	47.23
Maine	ME	36	729,893	7,455	10,213.83	1,003,972	14,925	14,865.95	37.55	100.20	45.55
Kansas	KS	35	1,675,438	17,290	10,319.69	1,974,238	29,621	15,003.76	17.83	71.32	45.39
Maryland	MD	34	2,721,609	28,585	10,502.98	3,709,594	56,319	15,181.98	36.30	97.02	44.55
California	CA	33	15,668,731	155,890	9,949.11	22,895,965	329,267	14,381.01	46.13	111.22	44.55
Wisconsin	WI	32	2,982,366	31,233	10,472.56	3,993,348	60,017	15,029.24	33.90	92.16	43.51
Arkansas	AR	31	1,468,700	16,232	11,051.95	2,024,466	31,972	15,792.81	37.84	96.97	42.90
South Carolina	SC	30	1,952,830	22,719	11,633.89	2,987,593	49,434	16,546.43	52.99	117.59	42.23
Nebraska	NE	29	1,093,255	11,255	10,294.94	1,320,617	19,291	14,607.57	20.80	71.40	41.89
Montana	MT	28	598,982	6,623	11,057.09	715,512	11,126	15,549.70	19.45	67.99	40.63
Ohio	OH	27	7,031,428	72,000	10,239.74	7,707,842	110,491	14,334.88	9.62	53.46	39.99
Virginia	VA	26	3,460,686	38,532	11,134.21	5,178,156	80,337	15,514.60	49.63	108.49	39.34
New Mexico	NM	25	854,562	11,308	13,232.51	1,304,721	23,966	18,368.68	52.68	111.94	38.81
Florida	FL	24	7,267,962	79,002	10,869.90	13,373,700	201,531	15,069.20	84.01	155.10	38.63
Idaho	ID	23	631,008	6,943	11,003.03	978,450	14,866	15,193.42	55.06	114.11	38.08
Oregon	OR	22	1,990,689	19,088	9,588.64	2,692,948	35,282	13,101.63	35.28	84.84	36.64
New Hampshire	NH	21	652,411	6,427	9,851.15	998,214	13,429	13,453.03	53.00	108.95	36.56
Tennessee	TN	20	2,809,655	33,505	11,924.95	4,351,868	70,814	16,272.09	54.89	111.35	36.45
Kentucky	KY	19	2,055,297	25,233	12,277.06	2,860,729	47,466	16,592.27	39.19	88.11	35.15
Texas	TX	18	9,287,826	110,381	11,884.48	14,659,390	235,170	16,042.28	57.83	113.05	34.99
Louisiana	LA	17	2,259,417	24,417	10,806.77	3,083,516	44,979	14,586.92	36.47	84.21	34.98
Nevada	NV	16	625,673	6,107	9,760.69	1,596,353	20,776	13,014.67	155.14	240.20	33.34
Colorado	CO	15	2,048,409	22,411	10,940.69	3,341,275	47,962	14,354.40	63.12	114.01	31.20
Connecticut	CT	14	2,174,482	19,409	8,925.80	2,740,270	31,675	11,559.08	26.02	63.20	29.50
North Dakota	ND	13	418,758	5,284	12,618.27	466,701	7,570	16,220.24	11.45	43.26	28.55
Alabama	AL	12	2,271,493	29,027	12,778.82	3,637,414	59,661	16,402.04	60.13	105.54	28.35
Vermont	VT	11	343,900	3,700	10,758.94	563,162	7,713	13,695.88	63.76	108.46	27.30
Pennsylvania	PA	10	7,056,168	71,542	10,138.93	8,460,530	108,042	12,770.12	19.90	51.02	25.95
Massachusetts	MA	9	3,640,202	35,390	9,721.99	4,612,829	55,458	12,022.56	26.72	56.71	23.66
New Jersey	NJ	8	4,927,909	50,264	10,199.86	5,870,720	73,819	12,574.10	19.13	46.86	23.28
Utah	UT	7	844,717	10,845	12,838.62	1,599,514	25,158	15,728.53	89.36	131.98	22.51
Rhode Island	RI	6	586,637	5,424	9,245.92	746,465	8,300	11,119.07	27.24	53.02	20.26
Dist. of Columbia	DC	5	344,042	3,293	9,571.51	330,363	3,713	11,239.15	-3.98	12.75	17.42
South Dakota	SD	4	480,778	6,195	12,885.36	566,255	8,397	14,829.01	17.78	35.54	15.08
Hawaii	HI	3	541,543	5,585	10,313.12	856,163	10,083	11,776.96	58.10	80.54	14.19
Washington	WA	2	2,662,658	28,922	10,862.08	4,681,927	55,476	11,848.97	75.84	91.81	9.09
Alaska	AK	1	221,000	2,665	12,058.82	486,582	5,035	10,347.69	120.17	88.93	-14.19
Total			145,298,796	1,520,865	550,631	200,548,972	2,989,807	770,750			

Sources: Federal Highway Administration, <http://www.fhwa.dot.gov/>, August 7, 2007
 US Census Bureau, August 7, 2007, <http://www.census.gov>

State Percent Change in Vehicle-Miles Traveled Per Driver From 1980 to 2005

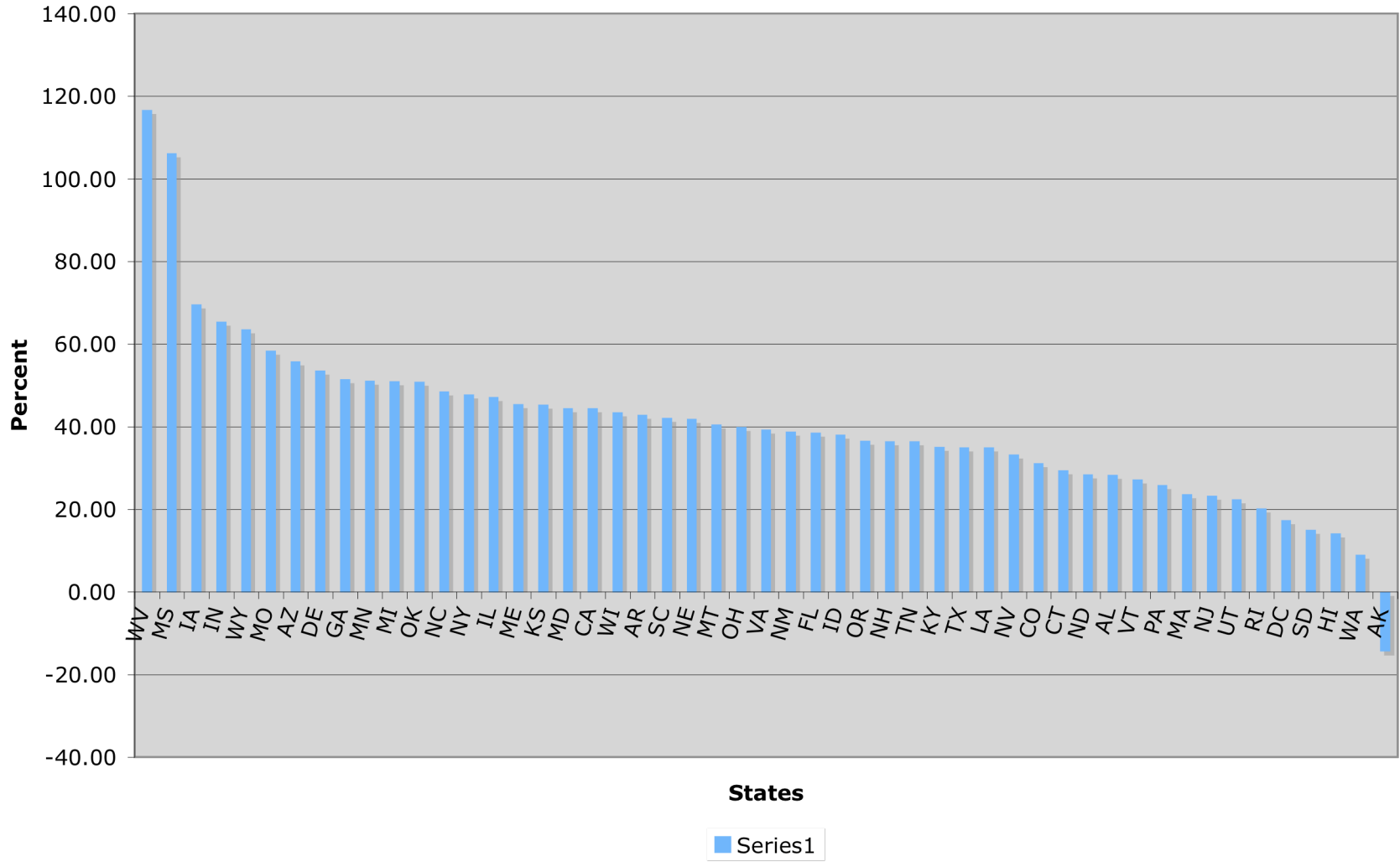


Table 6: State Comparison of Populations in 1980 and 2005 with % Change

State		Rank: Rate of Growth	1980 Population	2005 Population	% Change Population
Nevada	NV	1	800,493	2,414,807	201.66
Arizona	AZ	2	2,718,215	5,939,292	118.50
Florida	FL	3	9,746,324	17,789,864	82.53
Utah	UT	4	1,461,037	2,469,585	69.03
Georgia	GA	5	5,463,105	9,072,576	66.07
Alaska	AK	6	401,851	663,661	65.15
Colorado	CO	7	2,889,964	4,665,177	61.43
Texas	TX	8	14,229,191	22,859,968	60.66
California	CA	9	23,667,902	36,132,147	52.66
Washington	WA	10	4,132,156	6,287,759	52.17
Idaho	ID	11	943,935	1,429,096	51.40
New Mexico	NM	12	1,302,894	1,928,384	48.01
North Carolina	NC	13	5,881,766	8,683,242	47.63
New Hampshire	NH	14	920,610	1,309,940	42.29
Delaware	DE	15	594,338	843,524	41.93
Virginia	VA	16	5,346,818	7,567,465	41.53
Oregon	OR	17	2,633,105	3,641,056	38.28
South Carolina	SC	18	3,121,820	4,255,083	36.30
Maryland	MD	19	4,216,975	5,600,388	32.81
Hawaii	HI	20	964,691	1,275,194	32.19
Tennessee	TN	21	4,591,120	5,962,959	29.88
Minnesota	MN	22	4,075,970	5,132,799	25.93
Vermont	VT	23	511,456	623,050	21.82
Arkansas	AR	24	2,286,435	2,779,154	21.55
Montana	MT	25	786,690	935,670	18.94
New Jersey	NJ	26	7,364,823	8,717,925	18.37
Missouri	MO	27	4,916,686	5,800,310	17.97
Wisconsin	WI	28	4,705,767	5,536,201	17.65
Maine	ME	29	1,124,660	1,321,505	17.50
Oklahoma	OK	30	3,025,290	3,547,884	17.27
Alabama	AL	31	3,893,888	4,557,808	17.05
Kansas	RI	32	2,363,679	2,744,687	16.12
Mississippi	MS	33	2,520,638	2,921,088	15.89
Indiana	IN	34	5,490,224	6,271,973	14.24
Kentucky	KY	35	3,660,777	4,173,405	14.00
Rhode Island	RI	36	947,154	1,076,189	13.62
Connecticut	CT	37	3,107,576	3,510,297	12.96
South Dakota	SD	38	690,768	775,933	12.33
Nebraska	NE	39	1,569,825	1,758,787	12.04
Illinois	IL	40	11,426,518	12,763,371	11.70
Massachusetts	MA	41	5,737,037	6,398,743	11.53
New York	NY	42	17,558,072	19,254,630	9.66
Michigan	MI	43	9,262,078	10,120,860	9.27
Wyoming	WY	44	469,557	509,294	8.46
Louisiana	LA	45	4,205,900	4,523,628	7.55
Ohio	OH	46	10,797,630	11,464,042	6.17
Pennsylvania	PA	47	11,863,895	12,429,616	4.77
Iowa	IA	48	2,913,808	2,966,334	1.80
North Dakota	ND	49	652,717	636,677	-2.46
West Virginia	WV	50	1,949,644	1,816,856	-6.81
Dist. of Columbia	DC	51	638,333	550,521	-13.76
Total			226,545,805	296,410,404	

Sources: Federal Highway Administration, <http://www.fhwa.dot.gov/>, Aug. 7, 2007
 US Census Bureau, August 7, 2007, <http://www.census.gov>

Table 7: Annual VMT by Metropolitan Area from 1992 to 2005

Metro Area	Rank	State	1992			2005			% Change		Driving Change Index
			Population (in thousands)	Daily VMT (in thousands)	Annual VMT (in millions)	Population (in thousands)	Daily VMT (in thousands)	Annual VMT (in millions)	Population	Daily VMT and Annual VMT	
Houston	1	TX	2,902	71,505	26,099	2,487	97,774	35,687.51	-14.30	36.74	0.5955
Miami	2	FL	1,964	33,221	12,126	5,331	132,934	48,520.91	171.44	300.15	0.4742
Philadelphia	3	PA, NJ, DE, MD	5,167	70,657	25,790	5,296	106,558	38,893.67	2.50	50.81	0.4714
San Antonio	4	TX	1,229	24,698	9,015	1,143	33,681	12,293.57	-7.00	36.37	0.4663
Orlando	5	FL	951	21,301	7,775	1,335	42,448	15,493.52	40.38	99.28	0.4196
Tampa-St.	6	FL	1,737	34,578	12,621	2,251	63,178	23,059.97	29.59	82.71	0.4099
Memphis	7	TN	857	17,389	6,347	1,017	27,036	9,868.14	18.67	55.48	0.3102
Dallas-Fort Worth-Arlington	8	TX	3,198	78,308	28,582	3,746	119,649	43,671.89	17.14	52.79	0.3044
Denver-Aurora	9	CO	1,600	30,874	11,269	2,092	52,437	19,139.51	30.75	69.84	0.2990
Baltimore	10	MD	2,035	38,672	14,115	2,149	52,541	19,177.47	5.60	35.86	0.2866
Chicago	11	IL, IN	7,246	127,230	46,439	7,702	170,934	62,390.91	6.29	34.35	0.2640
Detroit	12	MI	3,947	83,179	30,360	3,931	104,126	38,005.99	-0.41	25.18	0.2569
St. Louis	13	MO, IL	1,986	47,861	17,469	2,106	63,584	23,208.16	6.04	32.85	0.2528
Boston	14	MA, RI, NH	2,775	52,372	19,116	4,077	94,248	34,400.52	46.92	79.96	0.2249
Kansas City	15	MO, KS	1,302	32,695	11,934	1,454	44,360	16,191.40	11.67	35.68	0.2149
Buffalo	16	NY	1,068	17,651	6,443	1,123	22,320	8,146.80	5.15	26.45	0.2026
New York-Newark	17	NY, NJ, CT	16,013	227,900	83,184	17,773	299,706	109,392.69	10.99	31.51	0.1848
Phoenix	18	AZ	2,022	40,770	14,881	3,270	77,267	28,202.46	61.72	89.52	0.1719
Columbus	19	OH	945	21,215	7,743	1,197	31,104	11,352.96	26.67	46.61	0.1575
San Diego	20	CA	2,487	52,268	19,078	2,903	70,408	25,698.92	16.73	34.71	0.1540
San Francisco-Oakland	21	CA	3,806	77,717	28,367	3,110	73,251	26,736.62	-18.29	-5.75	0.1535
Minneapolis-St. Paul	22	MN	2,112	46,252	16,882	2,519	63,491	23,174.22	19.27	37.27	0.1509
Riverside-San Bernardino	23	CA	1,300	27,226	9,937	1,828	42,861	15,644.27	40.62	57.43	0.1196
Washington	24	VA, MD, DC	3,283	68,297	24,928	4,251	97,009	35,408.29	29.49	42.04	0.0970
Los Angeles-Long Beach-Santa Ana	25	CA	11,846	248,974	90,876	12,149	279,041	101,849.97	2.56	12.08	0.0928
Cincinnati	26	OH, KY, IN	1,221	27,869	10,172	1,619	40,149	14,654.39	32.60	44.06	0.0865
Pittsburgh	27	PA	1,679	34,341	12,534	1,769	38,674	14,116.01	5.36	12.62	0.0689
Cleveland	28	OH	1,677	34,931	12,750	1,767	38,642	14,104.33	5.37	10.62	0.0499
San Jose	29	CA	1,503	33,084	12,076	1,649	37,009	13,508.29	9.71	11.86	0.0196
Milwaukee	30	WI	1,226	29,597	10,803	1,399	33,933	12,385.55	14.11	14.65	0.0047
Portland	31	OR, WA	1,247	25,251	9,217	1,729	35,144	12,827.56	38.65	39.18	0.0038
Providence	32	RI, MA	855	18,471	6,742	1,242	26,744	9,761.56	45.26	44.79	-0.0033
Las Vegas	33	NV	465	11,548	4,215	1,256	30,543	11,148.20	170.11	164.49	-0.0208
Sacramento	34	CA	1,190	23,964	8,747	1,787	35,211	12,852.02	50.17	46.93	-0.0215
Atlanta	35	GA	2,287	73,618	26,871	4,172	128,353	46,848.85	82.42	74.35	-0.0443
Seattle	36	WA	1,848	47,908	17,486	3,002	69,967	25,537.96	62.45	46.04	-0.1010

Note: 'Driving Change Index' represents the change in the relationship between per capita VMT between 1992 and 2005.

Source: Federal Highway Administration, <http://www.fhwa.dot.gov/>

Table 8: Highest Annual VMT by Metropolitan Area in 2005

Metro Area	State	Rank	Annual VMT (in millions)
New York-Newark	NY, NJ, CT	1	109,393
Los Angeles-Long Beach-Santa Ana	CA	2	101,850
Chicago	IL, IN	3	62,391
Miami	FL	4	48,521
Atlanta	GA	5	46,849
Dallas-Fort Worth-Arlington	TX	6	43,672
Philadelphia	PA, NJ, DE, MD	7	38,894
Detroit	MI	8	38,006
Houston	TX	9	35,688
Washington	VA, MD, DC	10	35,408
Boston	MA, RI, NH	11	34,401
Phoenix	AZ	12	28,202
San Francisco-Oakland	CA	13	26,737
San Diego	CA	14	25,699
Seattle	WA	15	25,538
St. Louis	MO, IL	16	23,208
Minneapolis-St. Paul	MN	17	23,174
Tampa-St. Petersburg	FL	18	23,060
Baltimore	MD	19	19,177
Denver-Aurora	CO	20	19,140
Kansas City	MO, KS	21	16,191
Riverside-San Bernardino	CA	22	15,644
Orlando	FL	23	15,494
Cincinnati	OH, KY, IN	24	14,654
Pittsburgh	PA	25	14,116
Cleveland	OH	26	14,104
San Jose	CA	27	13,508
Sacramento	CA	28	12,852
Portland	OR, WA	29	12,828
Milwaukee	WI	30	12,386
San Antonio	TX	31	12,294
Columbus	OH	32	11,353
Las Vegas	NV	33	11,148
Memphis	TN	34	9,868
Providence	RI, MA	35	9,762
Buffalo	NY	36	8,147

Source: Federal Highway Administration, <http://www.fhwa.dot.gov/>

Annual VMT by Major Metropolitan Areas

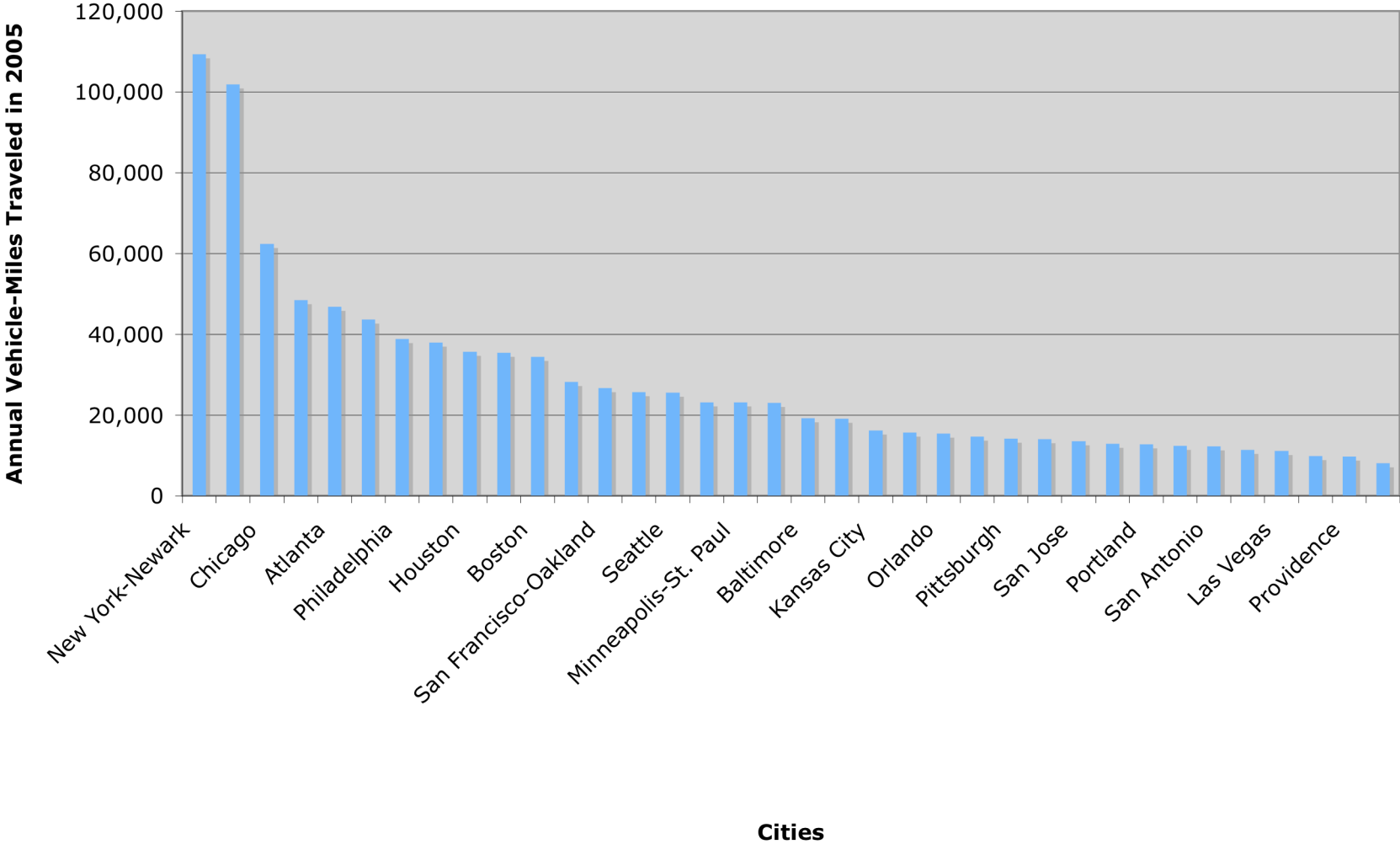


Table 9: Greatest Change in Annual VMT between 1992 and 2005

Metro Area	State	Rank	1992	2005	% Change
			Daily VMT (in thousands)	Daily VMT (in thousands)	in Daily VMT
Miami	FL	2	33,221	132,934	300.15
Las Vegas	NV	33	11,548	30,543	164.49
Orlando	FL	5	21,301	42,448	99.28
Phoenix	AZ	18	40,770	77,267	89.52
Tampa-St. Petersburg	FL	6	34,578	63,178	82.71
Boston	MA, RI, NH	14	52,372	94,248	79.96
Atlanta	GA	35	73,618	128,353	74.35
Denver-Aurora	CO	9	30,874	52,437	69.84
Riverside-San Bernardino	CA	23	27,226	42,861	57.43
Memphis	TN	7	17,389	27,036	55.48
Dallas-Fort Worth-Arlington	TX	8	78,308	119,649	52.79
Philadelphia	MD	3	70,657	106,558	50.81
Sacramento	CA	34	23,964	35,211	46.93
Columbus	OH	19	21,215	31,104	46.61
Seattle	WA	36	47,908	69,967	46.04
Providence	RI, MA	32	18,471	26,744	44.79
Cincinnati	OH, KY, IN	26	27,869	40,149	44.06
Washington	VA, MD, DC	24	68,297	97,009	42.04
Portland	OR, WA	31	25,251	35,144	39.18
Minneapolis-St. Paul	MN	22	46,252	63,491	37.27
Houston	TX	1	71,505	97,774	36.74
San Antonio	TX	4	24,698	33,681	36.37
Baltimore	MD	10	38,672	52,541	35.86
Kansas City	MO, KS	15	32,695	44,360	35.68
San Diego	CA	20	52,268	70,408	34.71
Chicago	IL, IN	11	127,230	170,934	34.35
St. Louis	MO, IL	13	47,861	63,584	32.85
New York-Newark	NY, NJ, CT	17	227,900	299,706	31.51
Buffalo	NY	16	17,651	22,320	26.45
Detroit	MI	12	83,179	104,126	25.18
Milwaukee	WI	30	29,597	33,933	14.65
Pittsburgh	PA	27	34,341	38,674	12.62
Ana	CA	25	248,974	279,041	12.08
San Jose	CA	29	33,084	37,009	11.86
Cleveland	OH	28	34,931	38,642	10.62
San Francisco-Oakland	CA	21	77,717	73,251	-5.75

Source: Federal Highway Administration, <http://www.fhwa.dot.gov/>

Greatest Change in Annual VMT Between 1992 and 2005

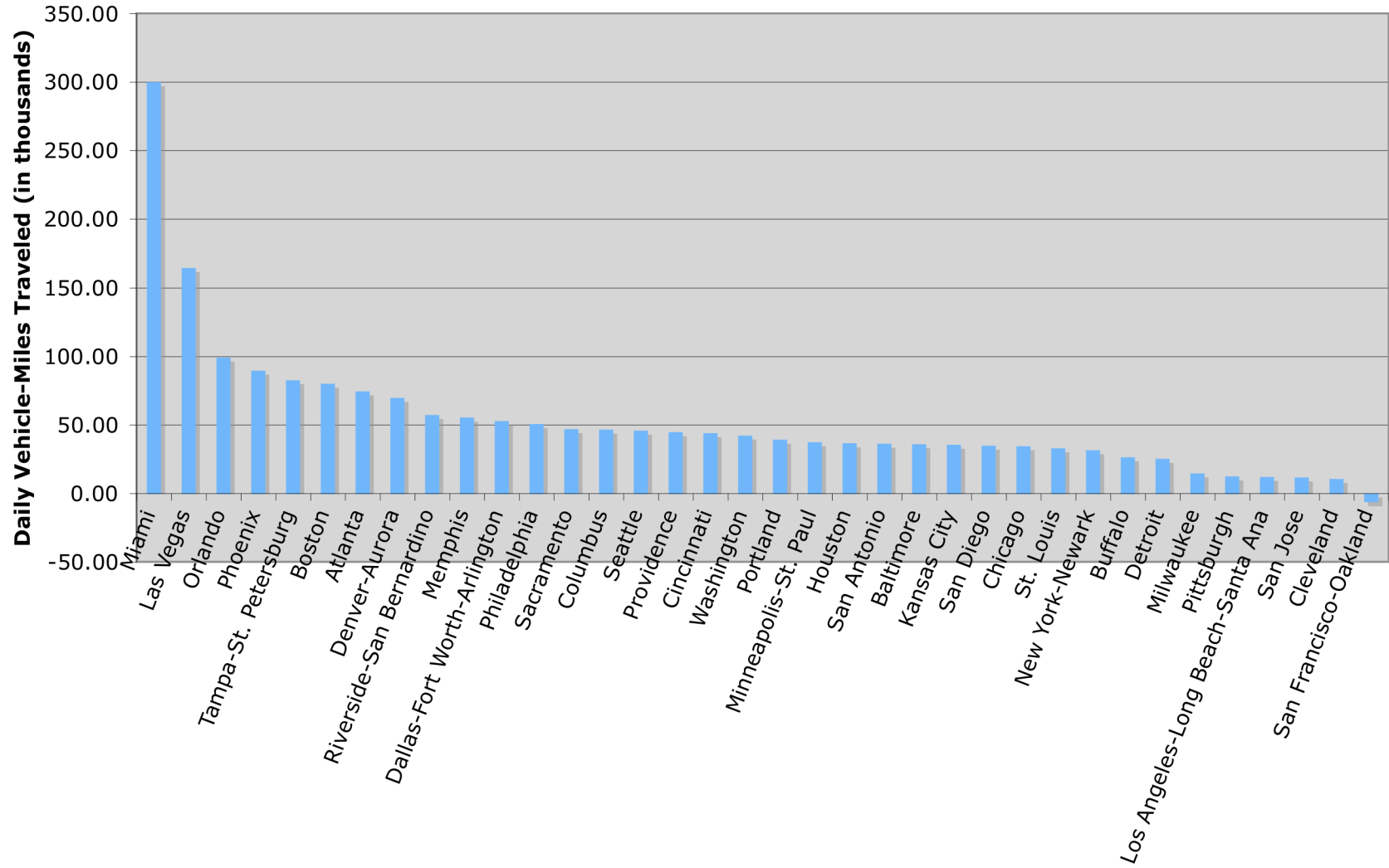


Table 10: Change in Driving Per Capita 1992-2005

Metro Area	State	Rank	1992		2005		Driving Change Index
			Population (in thousands)	Daily VMT (in thousands)	Population (in thousands)	Daily VMT (in thousands)	
Houston	TX	1	2,902.00	71,505.00	2,487.00	97,774.00	0.5955
Miami	FL	2	1,964.00	33,221.00	5,331.00	132,934.00	0.4742
Philadelphia	PA, NJ, DE, MD	3	5,167.00	70,657.00	5,296.00	106,558.00	0.4714
San Antonio	TX	4	1,229.00	24,698.00	1,143.00	33,681.00	0.4663
Orlando	FL	5	951.00	21,301.00	1,335.00	42,448.00	0.4196
Tampa-St. Petersburg	FL	6	1,737.00	34,578.00	2,251.00	63,178.00	0.4099
Memphis	TN	7	857.00	17,389.00	1,017.00	27,036.00	0.3102
Dallas-Fort Worth-Arlington	TX	8	3,198.00	78,308.00	3,746.00	119,649.00	0.3044
Denver-Aurora	CO	9	1,600.00	30,874.00	2,092.00	52,437.00	0.2990
Baltimore	MD	10	2,035.00	38,672.00	2,149.00	52,541.00	0.2866
Chicago	IL, IN	11	7,246.00	127,230.00	7,702.00	170,934.00	0.2640
Detroit	MI	12	3,947.00	83,179.00	3,931.00	104,126.00	0.2569
St. Louis	MO, IL	13	1,986.00	47,861.00	2,106.00	63,584.00	0.2528
Boston	MA, RI, NH	14	2,775.00	52,372.00	4,077.00	94,248.00	0.2249
Kansas City	MO, KS	15	1,302.00	32,695.00	1,454.00	44,360.00	0.2149
Buffalo	NY	16	1,068.00	17,651.00	1,123.00	22,320.00	0.2026
New York-Newark	NY, NJ, CT	17	16,013.00	227,900.00	17,773.00	299,706.00	0.1848
Phoenix	AZ	18	2,022.00	40,770.00	3,270.00	77,267.00	0.1719
Columbus	OH	19	945.00	21,215.00	1,197.00	31,104.00	0.1575
San Diego	CA	20	2,487.00	52,268.00	2,903.00	70,408.00	0.1540
San Francisco-Oakland	CA	21	3,806.00	77,717.00	3,110.00	73,251.00	0.1535
Minneapolis-St. Paul	MN	22	2,112.00	46,252.00	2,519.00	63,491.00	0.1509
Riverside-San Bernardino	CA	23	1,300.00	27,226.00	1,828.00	42,861.00	0.1196
Washington	VA, MD, DC	24	3,283.00	68,297.00	4,251.00	97,009.00	0.0970
Ana	CA	25	11,846.00	248,974.00	12,149.00	279,041.00	0.0928
Cincinnati	OH, KY, IN	26	1,221.00	27,869.00	1,619.00	40,149.00	0.0865
Pittsburgh	PA	27	1,679.00	34,341.00	1,769.00	38,674.00	0.0689
Cleveland	OH	28	1,677.00	34,931.00	1,767.00	38,642.00	0.0499
San Jose	CA	29	1,503.00	33,084.00	1,649.00	37,009.00	0.0196
Milwaukee	WI	30	1,226.00	29,597.00	1,399.00	33,933.00	0.0047
Portland	OR, WA	31	1,247.00	25,251.00	1,729.00	35,144.00	0.0038
Providence	RI, MA	32	855.00	18,471.00	1,242.00	26,744.00	-0.0033
Las Vegas	NV	33	465.00	11,548.00	1,256.00	30,543.00	-0.0208
Sacramento	CA	34	1,190.00	23,964.00	1,787.00	35,211.00	-0.0215
Atlanta	GA	35	2,287.00	73,618.00	4,172.00	128,353.00	-0.0443
Seattle	WA	36	1,848.00	47,908.00	3,002.00	69,967.00	-0.1010

Note: 'Driving Change Index' represents the change in the relationship between per capita VMT between 1992 and 2005.

Source: Federal Highway Administration, <http://www.fhwa.dot.gov/>

Table 11: Daily VMT Per Capita 2005

City	Rank	State	2005 Population (in thousands)	2005 Daily VMT (in thousands)	2005 Daily VMT Per Capita
Houston	1	TX	2,487	97,774	39.31
Dallas-Fort Worth- Arlington	2	TX	3,746	119,649	31.94
Orlando	3	FL	1,335	42,448	31.80
Atlanta	4	GA	4,172	128,353	30.77
Kansas City	5	MO, KS	1,454	44,360	30.51
St. Louis	6	MO, IL	2,106	63,584	30.19
San Antonio	7	TX	1,143	33,681	29.47
Tampa-St. Petersburg	8	FL	2,251	63,178	28.07
Memphis	9	TN	1,017	27,036	26.58
Detroit	10	MI	3,931	104,126	26.49
Columbus	11	OH	1,197	31,104	25.98
Minneapolis- St. Paul	12	MN	2,519	63,491	25.20
Denver-Aurora	13	CO	2,092	52,437	25.07
Miami	14	FL	5,331	132,934	24.94
Cincinnati	15	OH, KY, IN	1,619	40,149	24.80
Baltimore	16	MD	2,149	52,541	24.45
Las Vegas	17	NV	1,256	30,543	24.32
Milwaukee	18	WI	1,399	33,933	24.26
San Diego	19	CA	2,903	70,408	24.25
Phoenix	20	AZ	3,270	77,267	23.63
San Francisco- Oakland	21	CA	3,110	73,251	23.55
Riverside-San Bernardino	22	CA	1,828	42,861	23.45
Seattle	23	WA	3,002	69,967	23.31
Boston	24	MA, RI, NH	4,077	94,248	23.12
Los Angeles- Long Beach- Santa Ana	25	CA	12,149	279,041	22.97
Washington	26	VA, MD, DC	4,251	97,009	22.82

San Jose	27	CA	1,649	37,009	22.44
Chicago	28	IL, IN	7,702	170,934	22.19
Cleveland	29	OH	1,767	38,642	21.87
Pittsburgh	30	PA	1,769	38,674	21.86
Providence	31	RI, MA	1,242	26,744	21.53
Portland	32	OR, WA	1,729	35,144	20.33
Philadelphia	33	PA, NJ, DE, MD	5,296	106,558	20.12
Buffalo	34	NY	1,123	22,320	19.88
Sacramento	35	CA	1,787	35,211	19.70
New York- Newark	36	NY, NJ, CT	17,773	299,706	16.86

Source: Federal Highway Administration, <http://www.fhwa.dot.gov/>