

# **Environmental Resource Permitting (ERP) in the Northwest Florida Water Management District**









Copyright 2007



Copyright 2007

# **2006 Florida Legislature – Addressed Stormwater in the Northwest Florida WMD**

- **House Bill 7163**
- **Improve Water Quality**
- **Provide Flood Protection**



## **Section 373.4145(1), F.S.**

- **Implement ERP program in Panhandle**
- **Two Phased Approach**
- **Phase 1: No Sooner Than Jan 1, 2007; Regulate "Stormwater"**
- **Phase 2: No Sooner Than Jan 1, 2008; Regulate "Wetlands"**

# NW ERP Stormwater Implementation Parameters

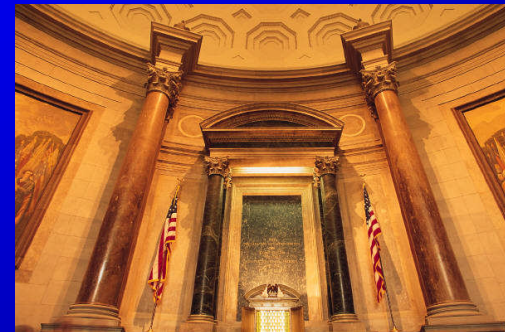
“Update existing stormwater rules within the Panhandle... while at the same time “taking into consideration the differing physical and natural characteristics of the area.”



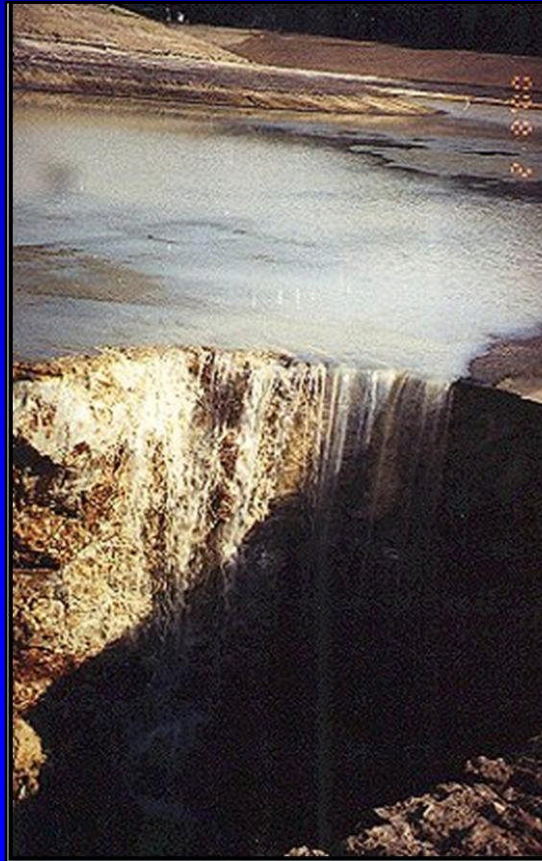
# NW ERP Stormwater Implementation Parameters

“...and based on the least restrictive stormwater quality and quantity measures and criteria adopted in the rules of the other Water Management Districts.”

See Section 373.4145(1)(a)



# Karst Topography



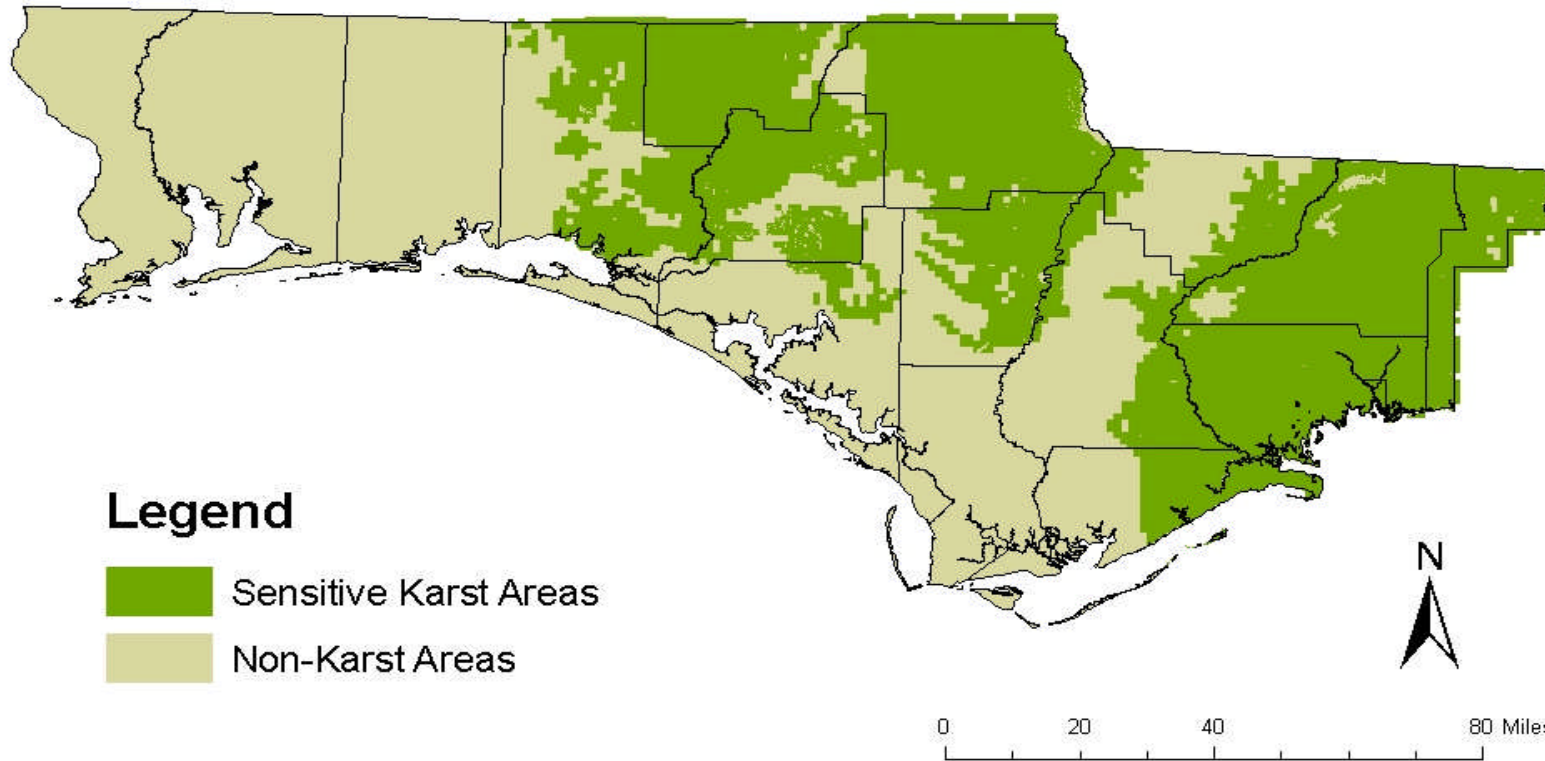
Sinkholes &  
Solution Pipes



# Dangerous Karst Topography



# Sensitive Karst Areas - Northwest Florida



# Karst Opt-Out Provision



# **Karst Criteria**

- **Nearly Identical to St. Johns:**
  - **3' Soil Separation**
  - **10 Maximum Basin Depth**
  - **Horizontal Pond Bottom (no deep spots)**
  - **Pond Bottom and Side Slopes must be Fully Vegetated or Otherwise Stabilized**



Copyright 2007